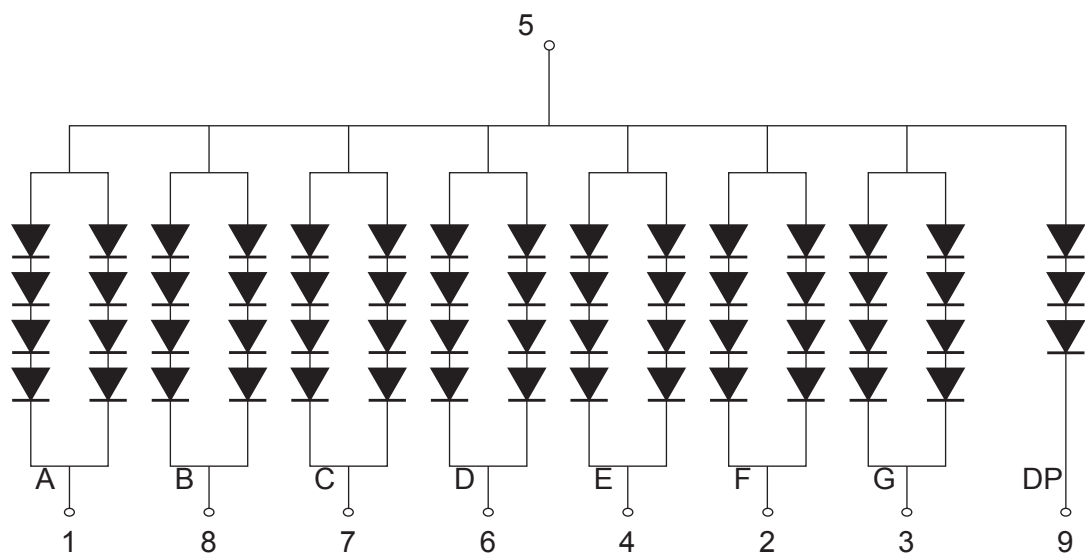
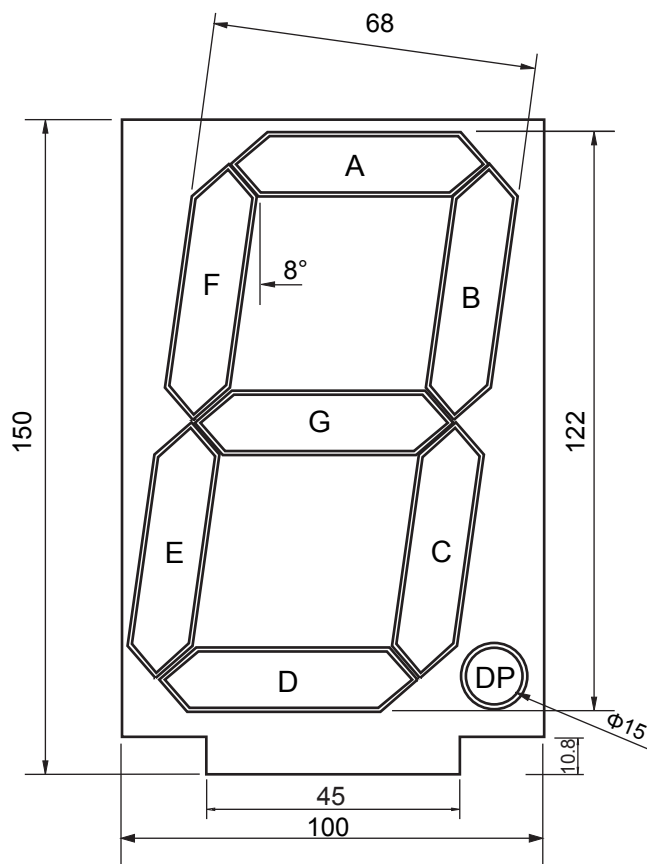
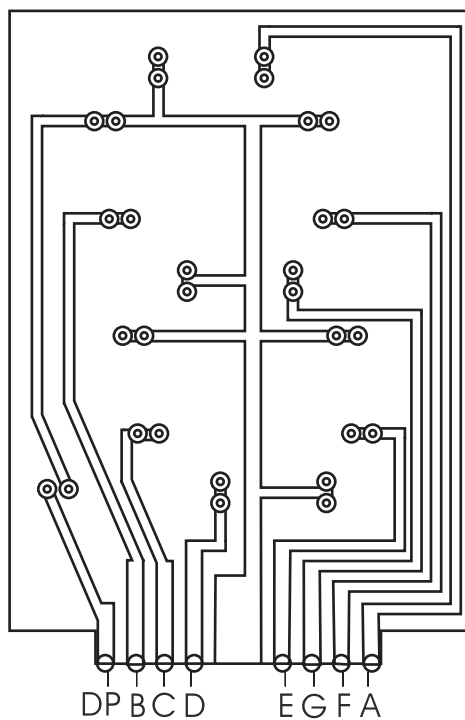
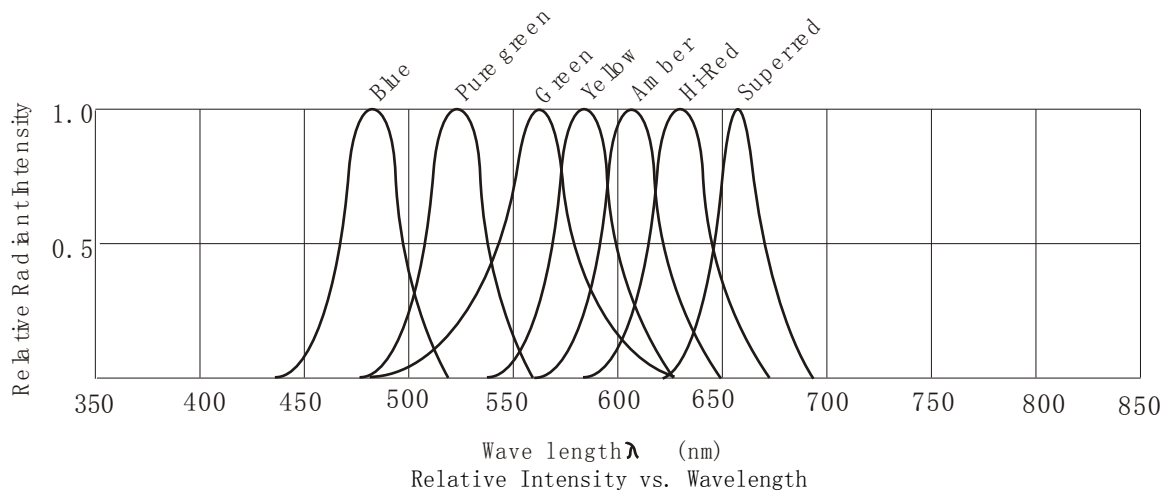


## KTM03B





### SEGMENT

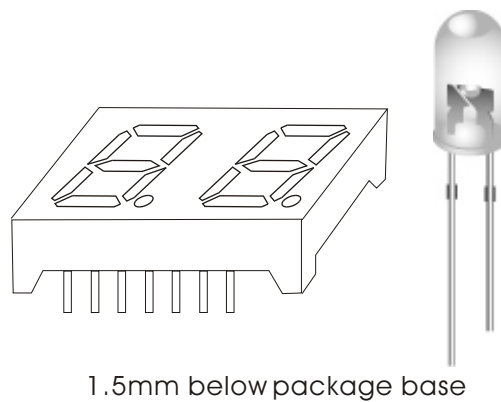
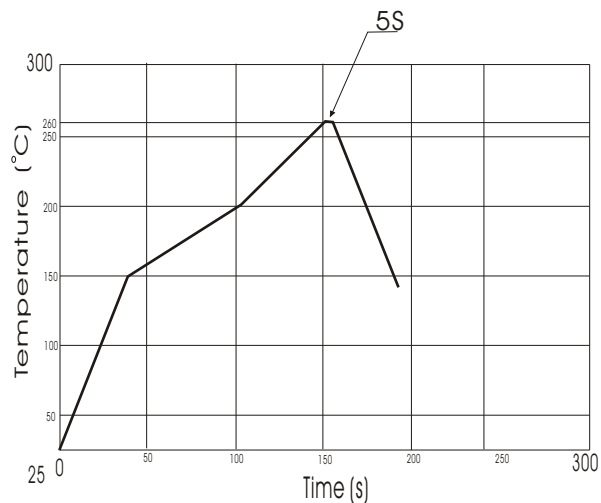
Parameter	Symbol	Condition	Min.	Typ .	Max.	Unit
Forward Voltage	Vf	If=40mA	11.5		12.5	V
Reverse Voltage	Vr	Ir=10uA	5.0			V
Luminous Intensty	Iv	If=40mA	0.57			cd
Spectrum With Of Half Value	$\Delta\lambda$	If=40mA	22			nm
Wavelength	D $\lambda$	If=40mA	465	466	467	nm
Operating Temperature Range		-35℃ to 85℃				
Storage Temperature Range		-35℃ to 85℃				
Solder Temperature 1.5mm below seating plane for 3 Seconds at 260℃						

### DOT

Parameter	Symbol	Condition	Min.	Typ .	Max.	Unit
Forward Voltage	Vf	If=20mA	8.5		9.5	V
Reverse Voltage	Vr	Ir=10uA	5.0			V
Luminous Intensty	Iv	If=20 mA	0.57			cd
Spectrum With Of Half Value	$\Delta \lambda$	If=20 mA	22			nm
Wavelength	D $\lambda$	If=20 mA	465	466	467	nm
Operating Temperature Range		-35 C to 85°C				
Storage Temperature Range		-35°C to 85°C				
Solder Temperature 1.5mm below seating plane for 3 Seconds at 260°C						

Absolute Maximum Rating at Ta=25°C

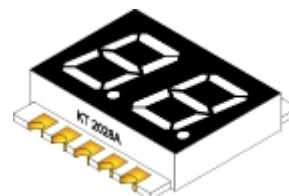
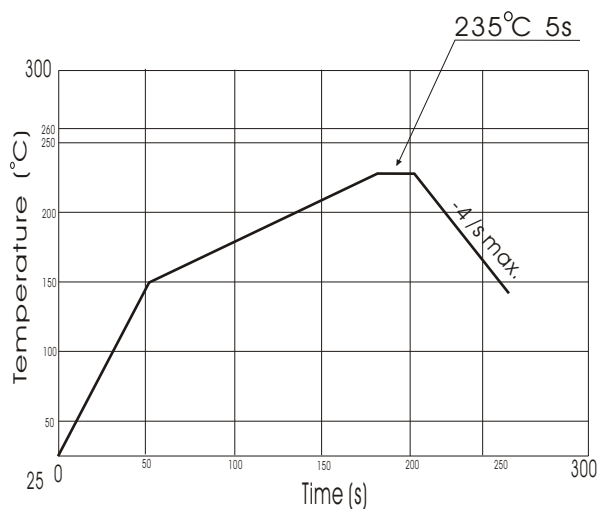
### Wave Soldering for Lead-Free Through-hole LED



Solder Temperature

260°C for 3 Seconds

### Lead-free SMT process



Lead solder Temperature

235°C for 5 Seconds

Notes: Recommend the wave temperature max. 235°C.  
Do not apply stress on the epoxy when temperature over 80°C.  
No more than once.